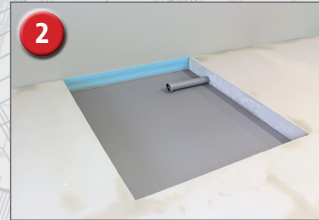
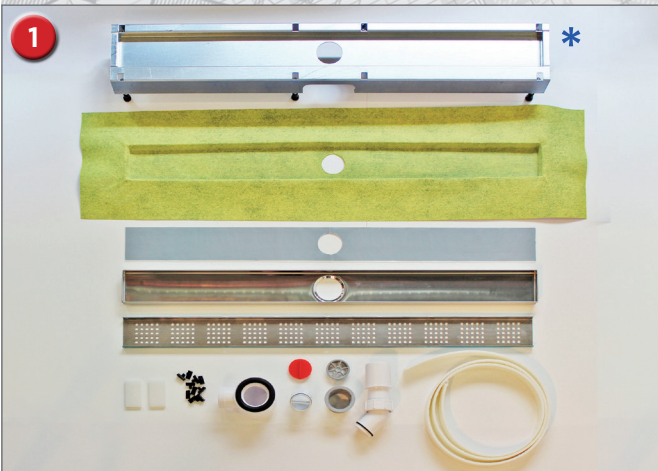


# VARIO-LINE

1/2

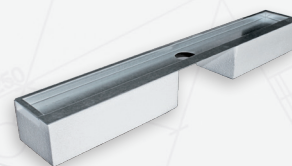
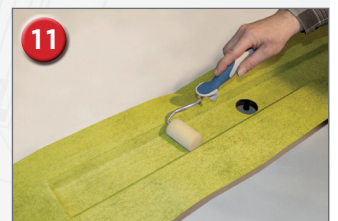
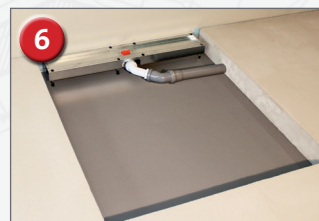
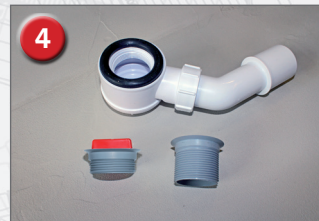
## Installation instructions for VARIO-LINE shower drainage channel

**DURAL**



### Installation instructions for VARIO-LINE:

1. Overview of all parts.
2. Recess in the screed the same size as the shower area with a connection to the domestic drainage system.
3. Attach self-adhesive soundproofing insulation strip to the reverse side of the drainage channel (side facing the wall).
4. Outlet bowl with screw coupling.
5. Pre-assemble the outlet bowl with the screw coupling and leave the red assembly aid inserted as a protective cover.
6. Position the drainage channel and connect the DN50 channel drain to the drainpipe (connecting sleeve).
7. Adjust the height using the Allen key, and ensure it is level (please note: the drainage channel body must be level both lengthwise and across). Do not forget to carry out a leak test! Insulate the channel drain to soundproof it, and completely grout the mounting feet and drain outlet.
8. Apply the cement screed evenly leaving a 2% gradient towards the drainage channel. Remove screed to leave it flush with the edge of the drainage channel block. The edge also serves as a gauge for levelling the screed.
9. Now remove the screw coupling again. Adhere the butyl tape to the inside of the drainage channel body and press down firmly with a roller (remove the lower silicone strip beforehand).
10. Remove the upper silicone strip.
11. Apply the sealant membrane collar avoiding blisters and press down firmly with a roller.

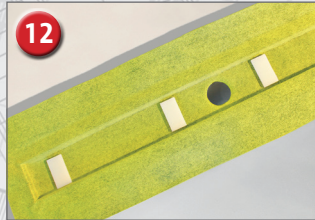


\* If the EPS mounting block method of installation is used: the height adjustment in this case is obtained by underfilling with mortar.

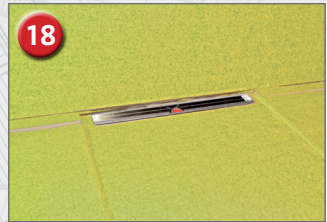
DURAL GmbH  
Südring 11  
D-56412 Ruppach-Goldhausen  
Tel. +49 (0) 2602/9261-0  
Fax +49 (0) 2602/9261-50  
welcome@dural.de

## Installation instructions for VARIO-LINE shower drainage channel

12. Insert spacers (number depends on intended flooring thickness). Please refer to table for details. A minimum of one set of 3 mm spacers must be used, and equally spaced out, however. Note: on either side of the drain hole, there must be a distance of only about 5 cm between the spacers. Self-adhesive strips prevent any movement during assembly work



Spacers	for flooring height
3 mm	6 mm
6 mm	9 mm
3 mm + 6 mm	12 mm
6 mm + 3 mm + 3 mm	15 mm
6 mm + 6 mm + 3 mm	18 mm
6 mm + 6 mm + 3 mm + 3 mm	21 mm



13. Insert the channel tray and fix it securely using the screw coupling. The red assembly aid is again used as a protective cover. Adhere the sealant membrane securely to the wall and floors using tile adhesive, and roll on firmly. The surrounding second drainage level, or drainage joint, between the channel tray and the drainage channel body must remain open (without any adhesive or grout) to allow any moisture from the sealing level to drain off through the channel.



### Recommended additional work:

14. – 21. We recommend wet-sealing the walls, and then the floor surfaces, by applying WP sealant membrane to achieve a professional finish.

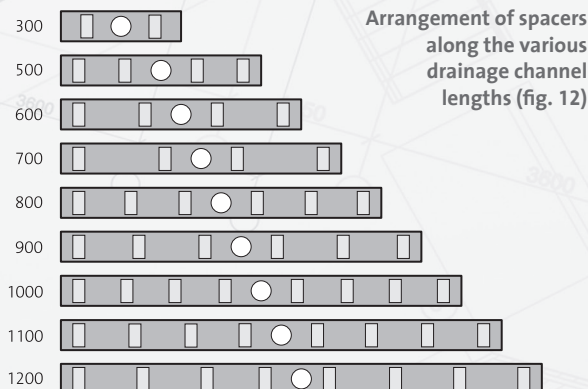


A perfect high-quality junction between the gradient and the wall is achieved using inclined wedges and wall edge profiles. No longer any need for complicated tile cutting.

Before using the channel for the first time, insert the odour seal pipe and the strainer. Attach the black clips (see close up view in fig. 21) to the designer grate and place the grate in the channel. Job done!



Remember to clean the shower drainage channel regularly. To do so, remove the grate and clean the underlying surface. It is now easy to remove any coarse dirt such as hairs or soap residues thanks to the removable strainer and odour seal.



When the grates are inserted, ensure that the mounting feet are correctly positioned (with the feet facing inwards if a square grate is used, and facing outwards if a panel or tileable channel is used)!

DURAL GmbH  
 Südring 11  
 D-56412 Ruppach-Goldhausen  
 Tel. +49 (0) 2602/9261-0  
 Fax +49 (0) 2602/9261-50  
 welcome@dural.de